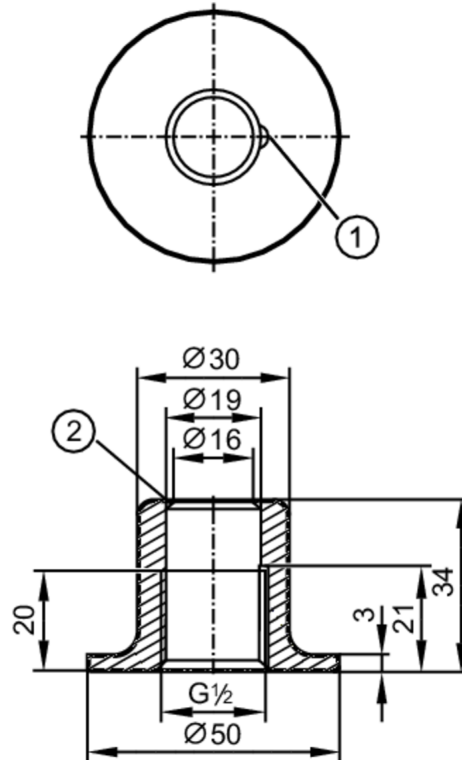


E43319



Welding adapter for process sensors

ADAPT G1/2 WELDING POT



- 1 Leakage port
- 2 sealing edge



EC 1935/2004 EHEDG Certified FCM FDA

| Application | |
|---|--|
| Design | long design for deeper installation |
| Pressure rating [bar] | 50 |
| Note on pressure rating | for the connection sensor - adapter |
| Tests / approvals | |
| Pressure Equipment Directive | A possible classification to PED depends on the application and has to be carried out by the user / operator. |
| Pressure Equipment Directive EAC | The adapter is intended for use in devices, machines and installations that do not fall under the categories of the technical rule TR CU 032/2013. |
| Safety instructions | The compatibility between medium and product material has to be checked in all applications. |
| Mechanical data | |
| Weight [g] | 200 |
| Materials | stainless steel (1.4435 / 316L) |
| Sensor connection | G 1/2 sealing cone |
| Process connection | welding adapter Ø 50 mm |
| Surface characteristics Ra/Rz of the wetted parts | 0.4 / 4 |
| Remarks | |
| Pack quantity | 1 pcs. |