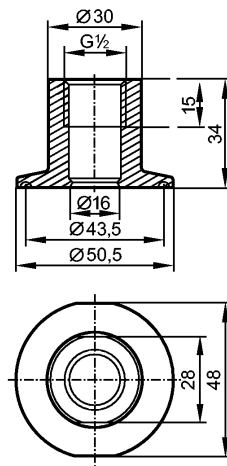


**E33401**

ADAPT G1/2-CLAMP DIN32676/1

Accessories



EC 1935/2004 EHEDG Certified 

Product characteristics	
Clamp adapter	
Clamp	
1-1.5"	
ISO 2852 / DIN 32676	
for units with G ½ adaptation	
Environment	
Pressure rating [bar]	25; to DIN 32676
Tests / approvals	
Standard	DIN 32676
Mechanical data	
Process connection	Clamp adapter 1-1.5"
for units with process connection	G ½
Housing materials	stainless steel 316L / 1.4404
Surface characteristics Ra / Rz of the wetted part(s)	0.4 / 4
Weight [kg]	0.02
Remarks	
Pack quantity [piece]	1