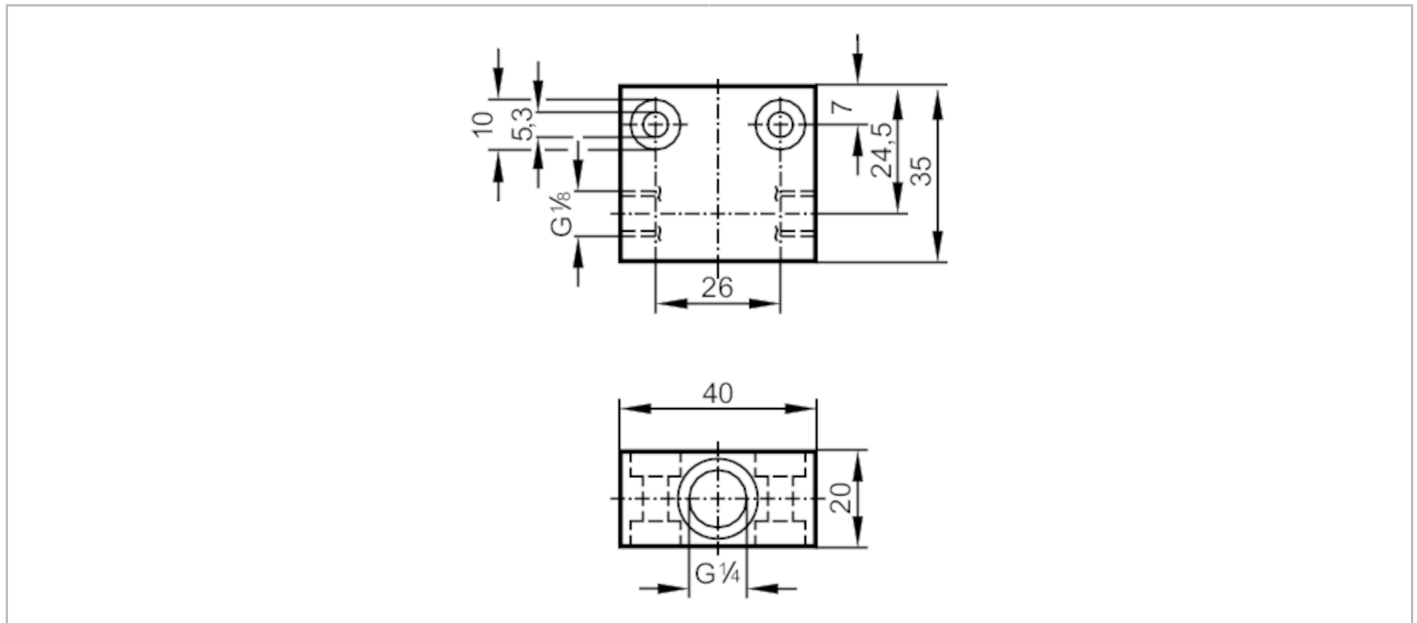


E40159



Process adapter for small volumetric flow quantities

FLOW ADAPT SF PTFE



Application	
Design	for flow sensors with ceramic probe G $\frac{1}{4}$
Installation	via internal G1/8A male thread, any mounting position
Medium temperature [°C]	0...80
Pressure rating [bar]	30
Measuring/setting range	
Flow range [ml/min]	2...50
Tests / approvals	
Pressure Equipment Directive	A possible classification to PED depends on the application and has to be carried out by the user / operator.
Pressure Equipment Directive EAC	The adapter is intended for use in devices, machines and installations that do not fall under the categories of the technical rule TR CU 032/2013.
Safety instructions	The compatibility between medium and product material has to be checked in all applications.
Mechanical data	
Weight [g]	48
Materials	PTFE
Sensor connection	G 1/4
Process connection	G 1/8
Remarks	
Remarks	Can only be used in combination with the flow sensor's relative operating mode.
Pack quantity	1 pcs.