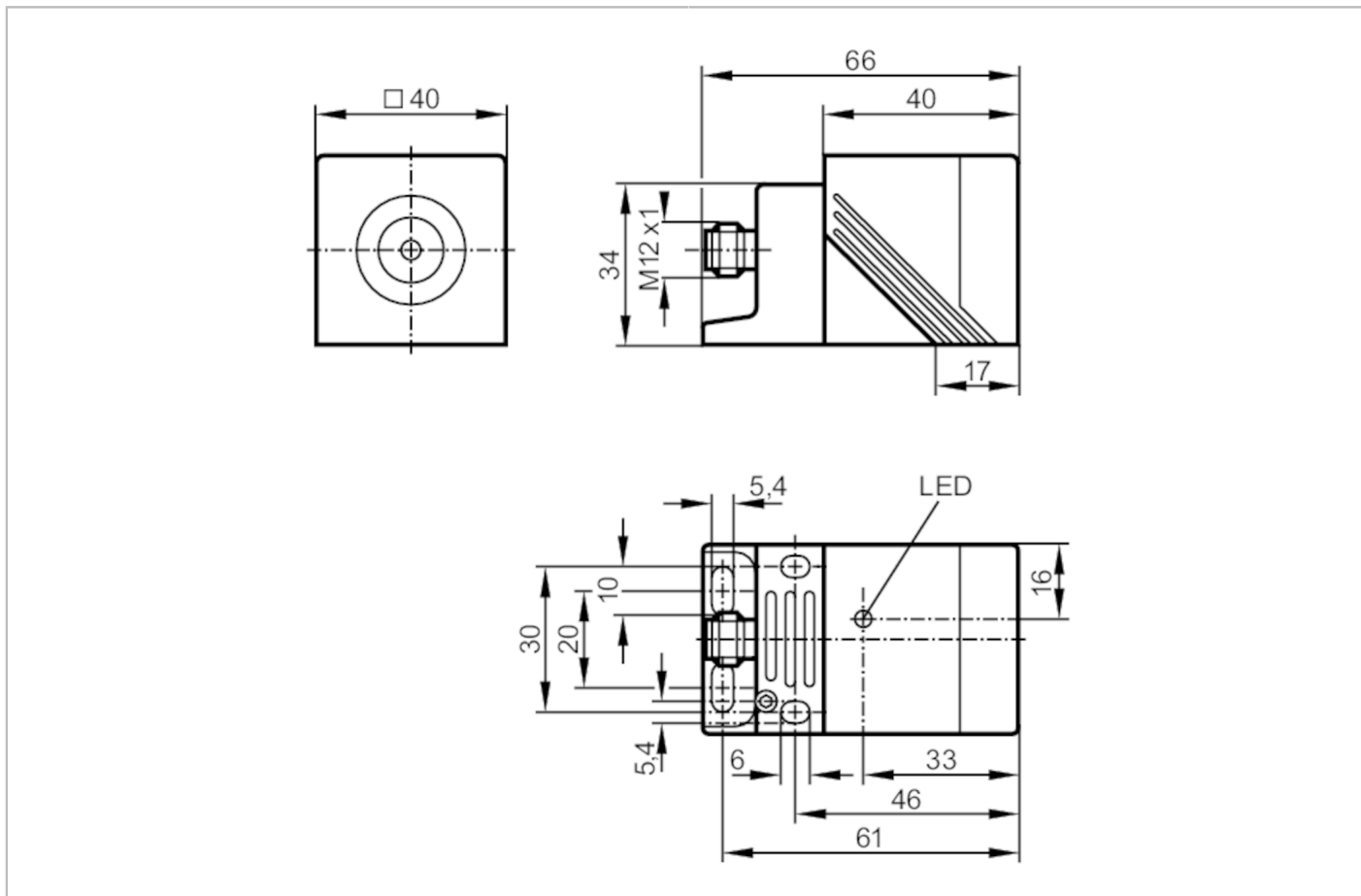


NM500A



Inductive NAMUR sensor

IMC2020BN/US/2G/1D



Product characteristics

Electrical design		NAMUR
Output function		normally closed
Sensing range	[mm]	20
Housing		rectangular
Dimensions	[mm]	40 x 40 x 66

Application

Special feature		Gold-plated contacts
-----------------	--	----------------------

Electrical data

Connection to switching amplifiers		yes
Switching amplifiers		connection to certified intrinsically safe circuits with the max. values: U = 15 V / I = 50 mA / P = 120 mW
Nominal voltage DC	[V]	8.2; (1kΩ)
Supply voltage DC	[V]	7.5...30; (when used outside the hazardous area)
Current consumption	[mA]	< 1; (disabled; conductive: > 2,1)
Protection class		III

Outputs

Electrical design		NAMUR
-------------------	--	-------

NM500A



Inductive NAMUR sensor

IMC2020BN/US/2G/1D

Output function		normally closed
Permanent current rating of switching output DC [mA]		30; (when used outside the hazardous area)
Switching frequency DC [Hz]		200
Detection zone		
Sensing range [mm]		20
Real sensing range Sr [mm]		20 ± 10 %
Accuracy / deviations		
Correction factor		steel: 1 / stainless steel: 0.7 / brass: 0.5 / aluminium: 0.4 / copper: 0.3
Hysteresis [% of Sr]		1...15
Switch point drift [% of Sr]		-10...10
Operating conditions		
Ambient temperature [°C]		-20...70
Protection		IP 67
Tests / approvals		
Approval		BVS 04 ATEX E 091 X; IECEx BVS 06.0003
ATEX marking		⊕ II 2G Ex ia IIB T6 Gb
		⊕ II 1D Ex ia IIIC T 90°C Da
EMC	EN 60947-5-6	
Shock/vibration resistance		30 g (11 ms) / 10-55 Hz (1 mm)
MTTF [years]		2825
Safety classification		
Max. internal capacitance [nF]		250
Max. internal inductance [μH]		450
Mechanical data		
Weight [g]		181.5
Housing		rectangular
Mounting		flush mountable
Dimensions [mm]		40 x 40 x 66
Materials		housing: PPE; sensing face: PPE orange; end cap: PPS; mounting adapter: PPS black; screw: steel galvanised
Displays / operating elements		
Display	switching status	1 x LED, yellow
Accessories		
Items supplied		Mounting bracket: 1 Allen key: 1
Remarks		
Remarks		5 positions of the active zone possible
Pack quantity		1 pcs.

NM500A

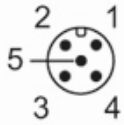


Inductive NAMUR sensor

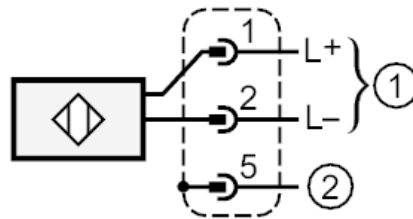
IMC2020BN/US/2G/1D

Electrical connection - plug

Connector: 1 x M12; coding: A; Locking: brass, white bronze coated; Contacts: gold-plated



Connection



- 1 = connection to NAMUR amplifiers
- 2 = potential equalisation of plug housing