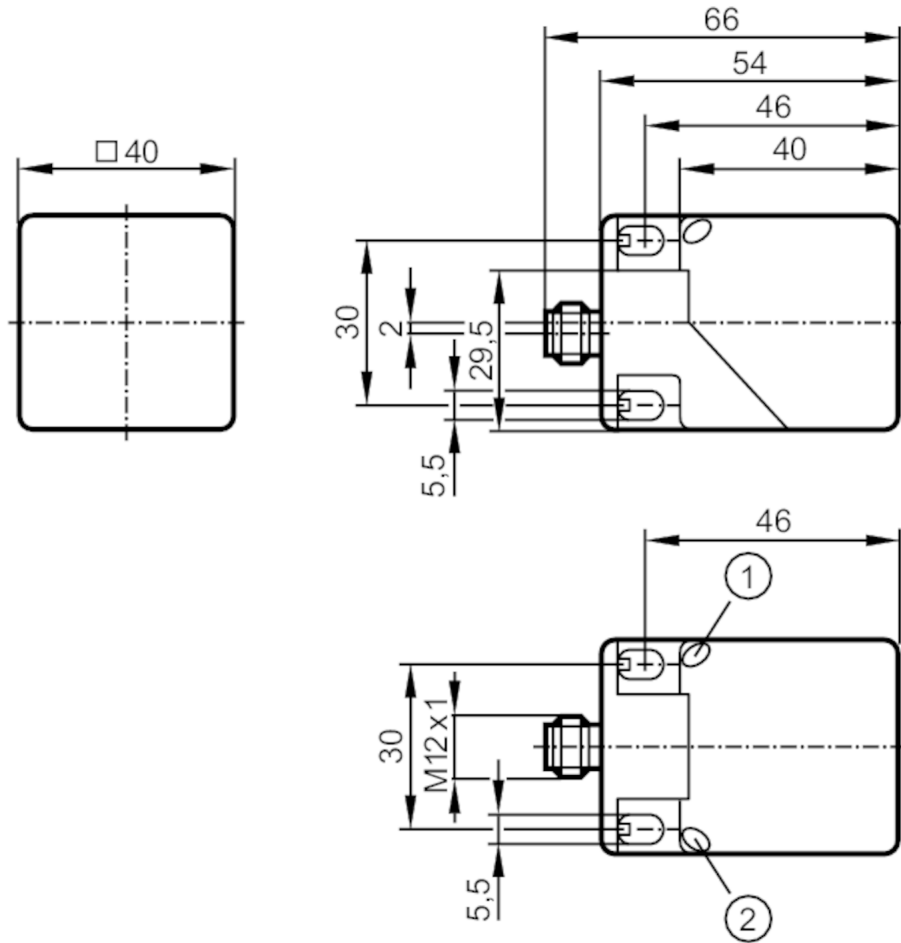


IM5125



Inductive sensor

IMC4035UCPKG/K1/SC/US-100-DPA



- 1 LED yellow
- 2 LED green



Product characteristics

Electrical design	PNP
Output function	complementary
Sensing range [mm]	35
Housing	rectangular
Dimensions [mm]	40 x 40 x 54

Application

Special feature	Correction factor K = 1; Magnetic-field immune; anti-spatter
Magnetic-field immune	yes
Max. magnetic field immunity [mT]	300

Electrical data

Operating voltage [V]	10...36 DC
Current consumption [mA]	< 20
Protection class	II
Reverse polarity protection	yes

IM5125



Inductive sensor

IMC4035UCPKG/K1/SC/US-100-DPA

Outputs		
Electrical design		PNP
Output function		complementary
Max. voltage drop switching output DC [V]		2.5
Max. leakage current [mA]		0.1
Permanent current rating of switching output DC [mA]		200
Switching frequency DC [Hz]		200
Short-circuit protection		yes
Type of short-circuit protection		pulsed
Overload protection		yes
Detection zone		
Sensing range [mm]		35
Real sensing range Sr [mm]		35 ± 10 %
Operating distance [mm]		0...28.3
Accuracy / deviations		
Correction factor		steel: 1 / stainless steel: 1 / brass: 1 / aluminium: 1 / copper: 1
Hysteresis [% of Sr]		1...20
Switch point drift [% of Sr]		-10...10
Correction factor K = 1		yes
Operating conditions		
Ambient temperature [°C]		-25...70
Protection		IP 67
Tests / approvals		
EMC	EN 61000-4-2 ESD	8 kV CD / 6 kV AD
	EN 61000-4-3 HF radiated	10 V/m
	EN 61000-4-4 Burst	2 kV
	EN 61000-4-5 Surge	0,5 kV line to line, Ri: 2 Ohm
	EN 61000-4-6 HF conducted	10 V
	EN 55011	class B
MTTF [years]		972
UL approval	Ta	-25...70 °C
	Enclosure type	Type 1
	power supply	Class 2
	File number UL	E174191
Mechanical data		
Weight [g]		134
Housing		rectangular
Sensing face		5 positions selectable
Mounting		non-flush mountable
Dimensions [mm]		40 x 40 x 54
Materials		housing: PA anti-spatter; sensing face: PA black anti-spatter; end cap: PA; clamp: orange; screw: stainless steel (1.4567 / 304Cu)

IM5125



Inductive sensor

IMC4035UCPKG/K1/SC/US-100-DPA

Displays / operating elements

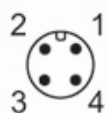
Display	switching status	1 x LED, yellow
	operation	1 x LED, green

Remarks

Pack quantity	1 pcs.
---------------	--------

Electrical connection - plug

Connector: 1 x M12; coding: A; Locking: locking, rotatable, stainless steel (1.4404 / 316L)



Connection

